

An aerial photograph of rolling green hills. The hills are covered in grass and have several rows of young, dark green trees planted on the slopes. The hills recede into the distance under a clear blue sky.

McRae Trust – Wairoa

Field Day – 12 March 2010

Permanent Forest Sink Initiative

Opportunities and Risks



Permanent Forest Sink Initiative

- What is it?
- How does it work?
 - » Land Eligibility
 - » Forest Eligibility
- Opportunities & Risks





Permanent Forest Sink Initiative

- Available throughout NZ
- Ability to earn carbon credits (& liabilities)
- Covenant in perpetuity (50 year minimum)
- Continuous cover harvesting
- Earn AAU's (not NZU's)



McRae Trust – Kauhauroa – 53.7 ha's





Key Points re Eligibility

- **Land Eligibility** - Must be on land that was not "forest land" at 31 Dec. 1989
 - Active land use change (human induced) since 31 Dec. 1989
- **Forest Eligibility** - Is it a forest?
 - an area of land of at least 1 ha that has, or is likely to have, tree crown cover from forest species of more than 30% on each hectare
 - species capable of reaching at least 5 metres in height in the place it is located



1990 Forest Cover

McRae Trust Farm - Potential Permanent Forest Sink Initiative (PFSI) Area

McRae Trust

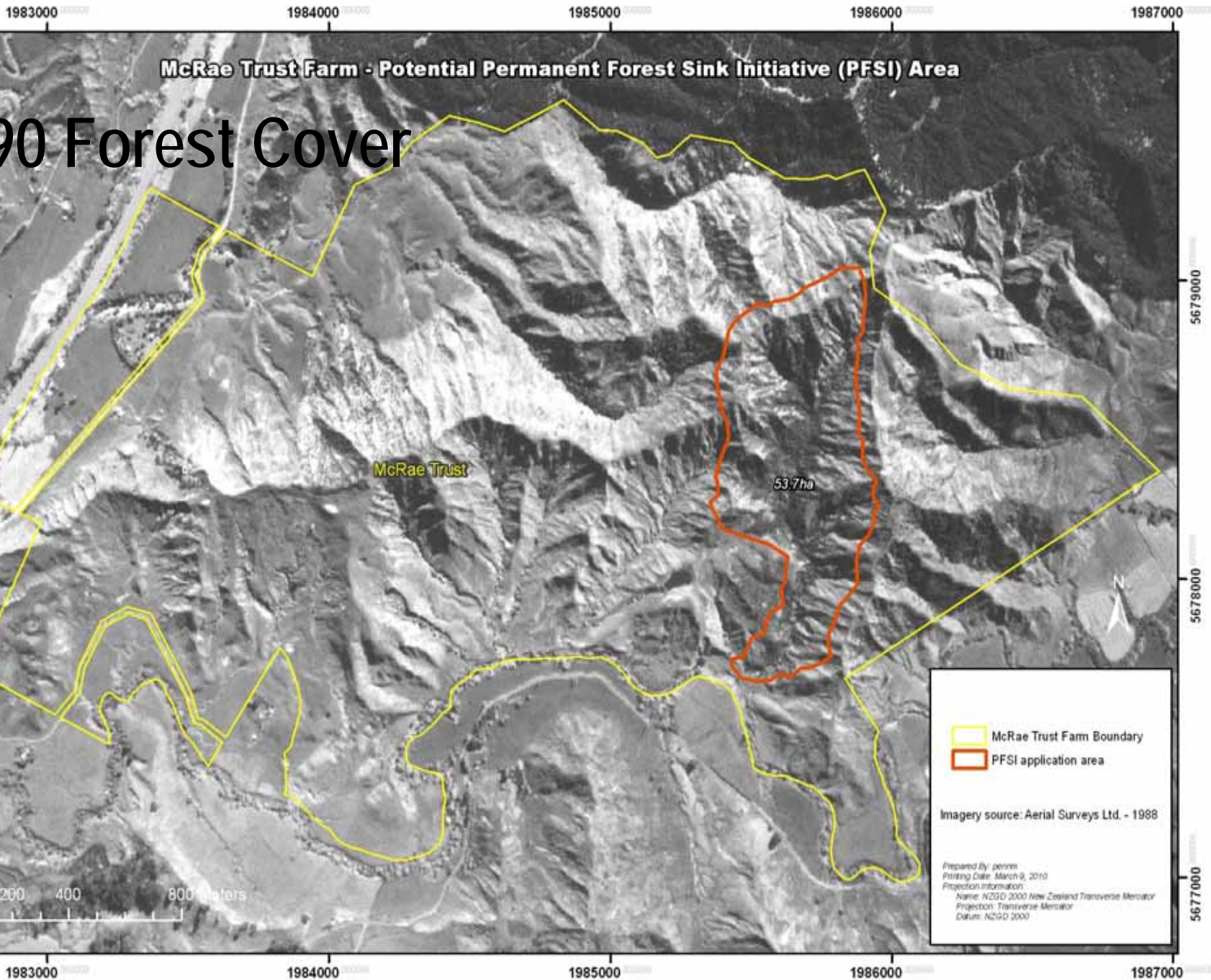
53.7ha

- McRae Trust Farm Boundary
- PFSI application area

Imagery source: Aerial Surveys Ltd. - 1988

Prepared by: penim
Printing Date: March 9, 2010
Projection information:
Name: NZGD 2000 New Zealand Transverse Mercator
Projection: Transverse Mercator
Datum: NZGD 2000

0 200 400 800 meters



2010 Forest Cover

McRae Trust Farm - Potential Permanent Forest Sink Initiative (PFSI) Area

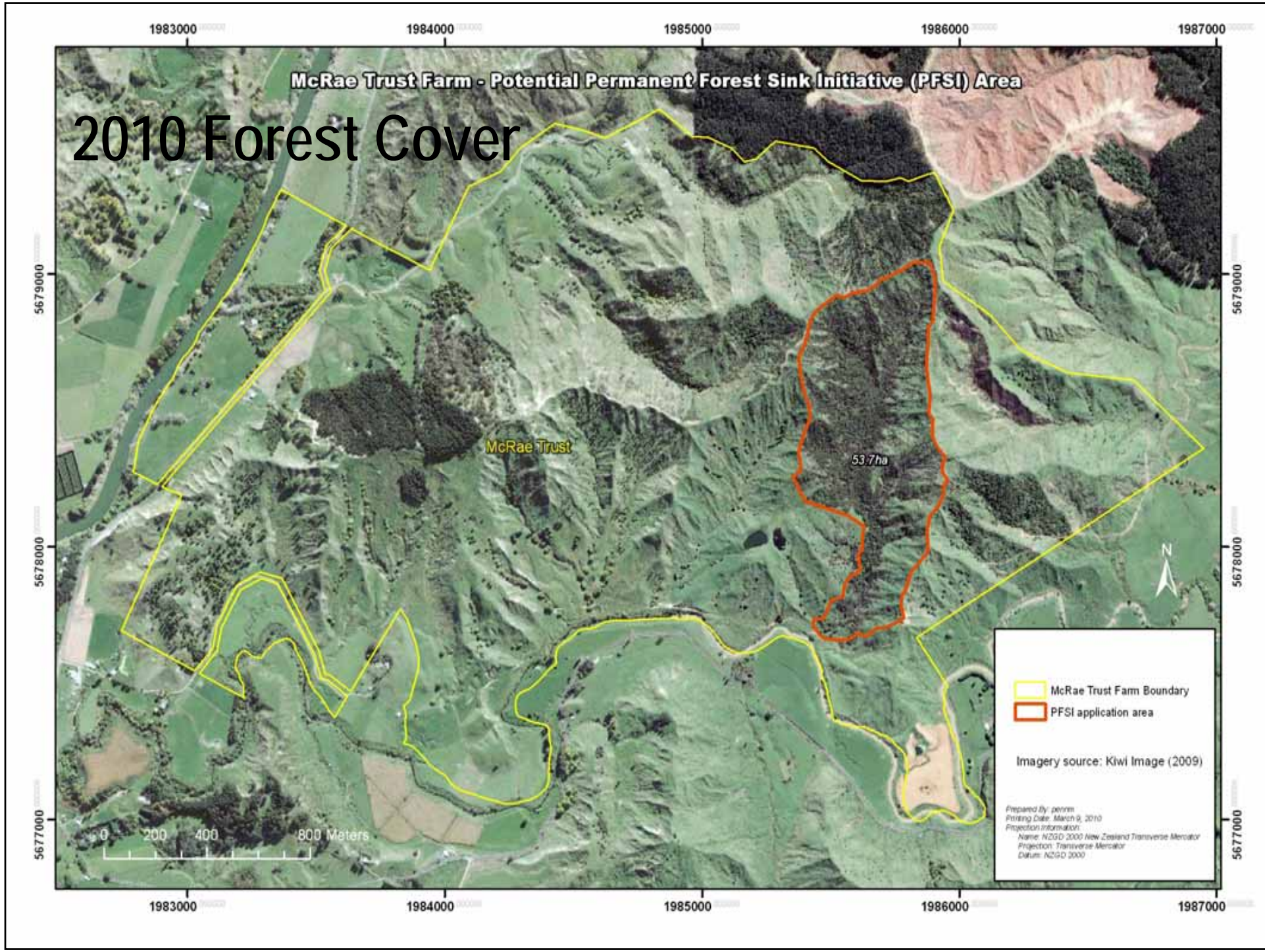
McRae Trust

53.7ha

- McRae Trust Farm Boundary
- PFSI application area

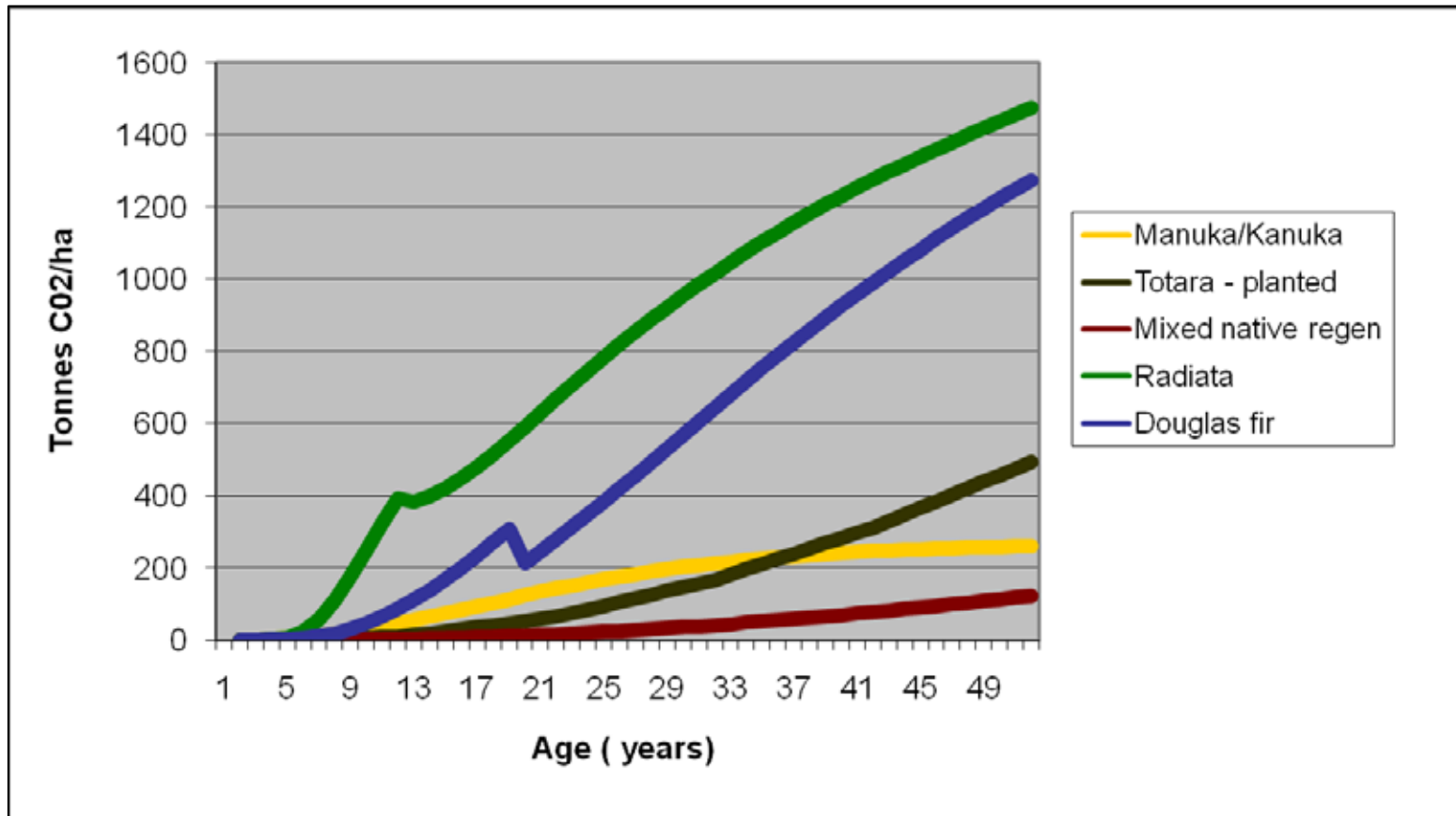
Imagery source: Kiwi Image (2009)

Prepared by: penm
Printing Date: March 9, 2010
Projection information:
Name: NZGD 2000 New Zealand Transverse Mercator
Projection: Transverse Mercator
Datum: NZGD 2000





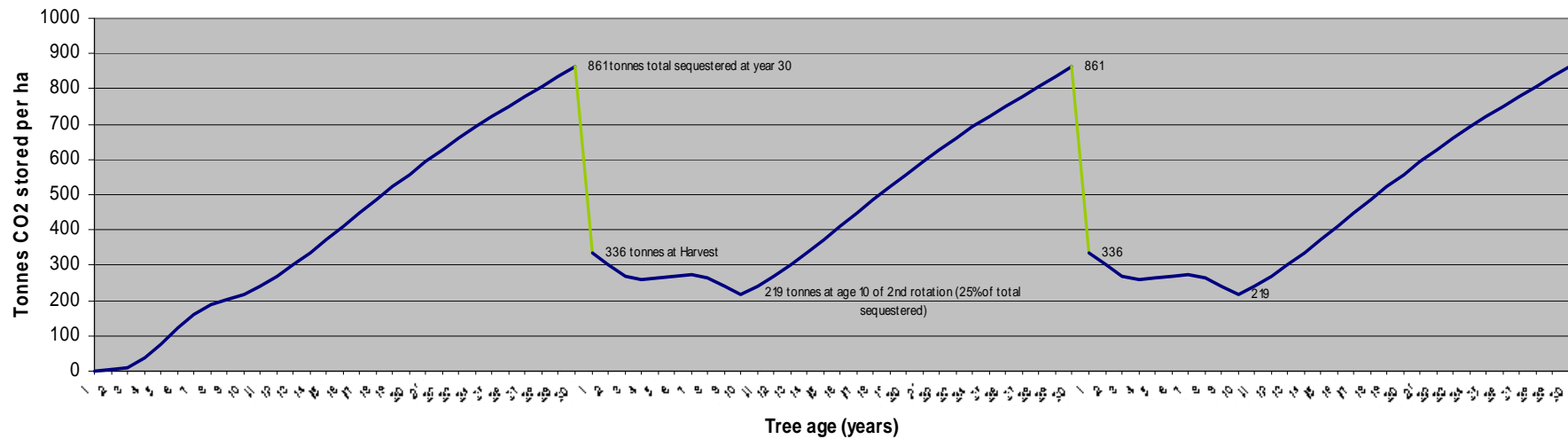
Opportunities & Risks





Opportunities & Risks

Gisborne District Forest Carbon (P.radiata) 30 year rotation





Summary of Key Points

- Land and Forest Eligibility
- Opportunities – (as carbon stocks increase)
- Risks – (as carbon stocks decrease)
 - Wind, Fire, Harvesting
 - Market price
 - Landowners appetite for risk
- Balanced Approach – site specific advice





Further Information

- Regional MAF Advisors
- MAF Website www.maf.govt.nz
 - Sustainable Forestry Bulletin
 - Guides and Fact Sheets
 - Media releases and advertising of key dates
- Technical Workshops and Seminars

